

# Wagoner One Step

(Rayna Gellert - fiddle - from her teaching videos)

**A**

Musical notation for section A, measures 1-12. The notation is in treble clef with a key signature of one sharp (F#) and a 4/4 time signature. It features a variety of note values including quarter, eighth, and sixteenth notes, as well as rests. Chord symbols C, G, and F# are placed above the staff. Bowing directions are indicated by 'V' (upbow) and 'v' (downbow) symbols. Accents are shown as '>' symbols. The piece includes a first ending (1.) and a second ending (2.) marked with repeat signs.

**B**

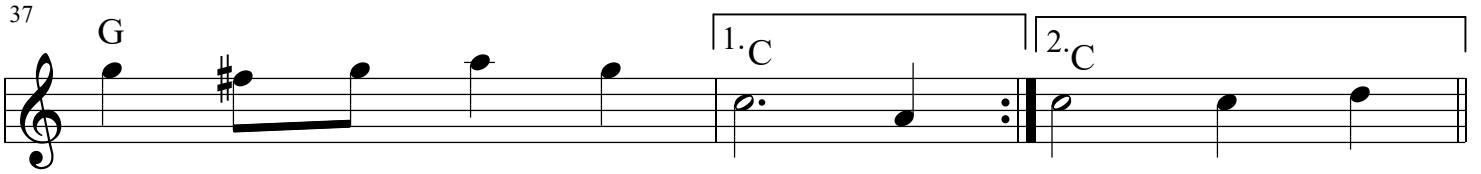
Musical notation for section B, measures 1-12. The notation is in treble clef with a key signature of one sharp (F#) and a 4/4 time signature. It features a variety of note values including quarter, eighth, and sixteenth notes, as well as rests. Chord symbols C, G, and F# are placed above the staff. Bowing directions are indicated by 'V' (upbow) and 'v' (downbow) symbols. Accents are shown as '>' symbols. The piece includes a first ending (1.) and a second ending (2.) marked with repeat signs.

trans: Mark Wardenburg  
April 2019

Three empty musical staves, each with a treble clef, provided for additional notation or practice.

# Wagoner One Step p. 2

**A**



**B**

